

PROJECT INFORMATION REPORT

City of Los Angeles

Bureau of Engineering

Department of Public Works

North East Interceptor Sewer (NEIS) Phase 2A

(C544)

Current Phase	Scope of Work
Project Cancelled	<p>The North East Interceptor Sewer (NEIS) Phase 2A project is the northern extension of the NEIS Phase 1 project. NEIS2A will construct approximately 3.8 miles of 8-foot diameter sewer in tunnel and associated structures. NEIS2A project is broken up into two sewer segments. Sewer segment "Line 1", which is approx. 3.03 miles in length, traverses from the d/s connection at the Division St. Shaft site, near the intersection of San Fernando Rd and Cazador St and terminates at the northern overflow parking lot for the Pony & Train Rides in Griffith Park, just north of the I-5 Griffith Park On & Off Ramps (I-5 Shaft Site) east of Crystal Springs Drive. Sewer segment "Line 2", AKA the "NOS Extension", is approx 0.77 miles in length, traverses from the I-5 shaft site to the Recreation & Parks Central Yard, which is south of LAGWRP and connects to the existing North Outfall Sewer (NOS) near Sequoia Street..</p>
Construction Information	
Expected Duration: from 12/2/2016 to 5/31/2020 Construction Cost: \$164,295,000 Contractor: No Contractor Selected	
Program Information	
Group: Sewers Program: Wastewater - Collection System Program Project Mgr: Doug Irvine PM Phone: 213-485-1665 Lead Division: Wastewater Conveyance Engineering Work Order: SZC11777 (Cancelled/WO Closed)	
Council District(s)	Project Status
1 - Gilbert Cedillo, 4 - David Ryu, 13 - Mitch O'Farrell	<p>The North East Interceptor Sewer (NEIS) Phase 2A project has been postponed, indefinitely, due to reduced flows in the wastewater collection system and due to other system needs.</p>
Neighborhood Council(s)	
Atwater Village NC, Elysian Valley Riverside NC, Glassell Park NC, Silver Lake NC	
Geographic Information	
Planning Area: East Area Address: N/A	
Information Resources	
Listed below are various resources available for finding more information related to projects.	

- City of Los Angeles Internet Home Page

<http://www.lacity.org/>
- Bureau of Engineering Internet Home Page

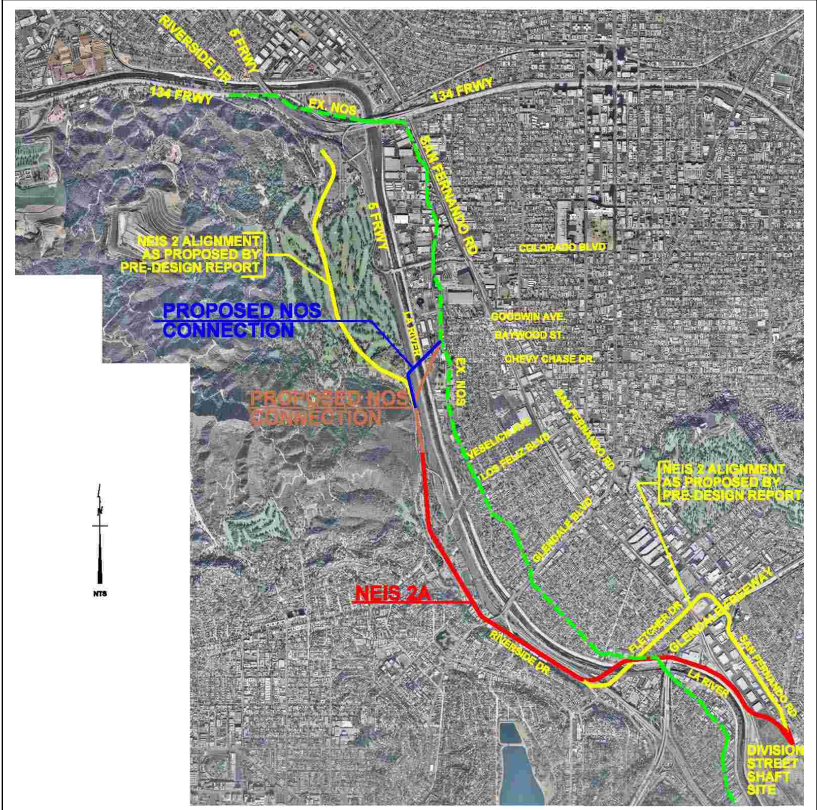
<http://eng.lacity.org/>
- BOE Mapping Application (Navigate LA)

<http://navigatela.lacity.org/>
- BOE Public Right of Way Reservation System

<http://navigatela.lacity.org/pwrsview/>
- Bureau of Engineering Project Information Reports

<http://eng.lacity.org/iuprs/>
- Bureau of Engineering Projects Out to Bid

<http://eng.lacity.org/docs/dpw/bids/consbids.pdf>



Gary Lee Moore, PE, ENV SP
City Engineer